

LINKS

Your Link to Lifelong Learning

Vol.15 No. 1 Student Publication of the Bernard Kleiman JobLink Learning Center June, 2011

JobLink is EXPANDING for you! By Bill Miller, retiree & volunteer

Teacher Bill Cameon is directing volunteers in building an addition to our small engine lab. Once completed, there will be room for ongoing projects, plus we'd like to be able to bring in classes like bicycle and motorcycle repair.

Thirty-one participants have volunteered to work on the project every Tuesday. Bill Miller is a retiree and volunteer in the project and he tells it like this:

When we started the small engine repair class expansion project, the weather for the first several weeks could not have been worse. We endured a cold rain almost every Tuesday. The afternoon group caught a few breaks and it was always fun to come in to JobLink and watch the progress unfold. Our first big weather break saw a crazy hot day in the 80's. And now we are battling with even hotter temps.

The first day, April 5th, the foundation boards were in and we looked over the site and the blueprints. On the 12th, concrete was poured for the floor. A couple of us have been bringing our cameras and documenting the work being done. The last week of April, we had two scaffolds delivered. On May 17 we built a main door frame for the north wall and the upright wood beams were prepped for the roof trusses and their support beams. As I write this the first week in June we have now got most of the roof trusses in place so we can begin to cover the area.

We've learned a lot – how to put up scaffolding, using an air nailer and how to use many different types of saws. It's great to see the roof trusses up now. I feel like we're making progress.

Co-worker Al Rodriguez (Caster operator from the 2BOF) concurred, "I enjoy working this project. It's a lot of hands-on instruction, plus we have a really good instructor."



The morning crew

◆ ◆ ◆ ***Diamond Poems*** ◆ ◆ ◆

Diamond poems are named for their shape.

As the poem below left illustrates they often go from one opposite to the next.

GROWTH

Growth
Nourishment, fruitful
Blossoming, climbing, blooming
Vision, focus, opaque, ruins
Drifting, depleting, departing
Numbness, lifeless
Deterioration

LEARNING

Student
Graduate, achieve
Reading, writing, measuring
Skill, knowledge, plan, diagram
Expanding, reveling, harvesting
Personal, emotional
Growth

These are by JobLink student and spouse, *Nicole Falardeau.*



In cooperation with The School City of Hammond



Institute for Career Development



ArcelorMittal



From Diane's Desk

*Diane Lentz
JobLink Coordinator*

When a shooting star starts its journey, is there any predicting how far it will go or where it will end?

What a journey, you, Local 1010 members have had at JobLink for the last 21 years. Our database is managed by the Institute for Career Development. So, let me share some interesting numbers with you.

Since we began in July 1990:

- 6,251** USWA, Local 1010 members (counted once) have taken a class at JobLink.
- 3,328** USWA, Local 1010 members are currently eligible to participate in JobLink.

As of December 2010:

- 738** USWA, Local 1010 members took classes in 2010.
- 469** USWA, Local 1010 members took more than one class.
- The participation rate (each person counted once) was **22%**.
- Of the enrollments in customized courses:

(Continued on page 5)

...Viewpoints...

*Steve Wagner
Local 1010 Representative*

Diane Lentz has been **Fired!**

The Bernard Kleiman Joblink Learning Center is 21 years new this year. I've had the distinct pleasure of serving on the 1989 contract negotiations that actually negotiated the Career Development language that we continue to enjoy some 22 years later. Local 1010 was aggressive in utilizing this great educational benefit. We were the pioneers in career development and actually opened the Joblink doors in the summer of 1990.

After a lengthy round of discussions and negotiations, we settled on partnering with the School City of Hammond (SCH) - Adult Education to deliver the training that we bargained for in the 1989 contract. Let me say that one of the main reasons we went with SCH to administer our program was largely in part because of Diane Lentz. Her "Can Do" attitude was critical in our final decision!

Diane's 21 + years of steady service has made Joblink the best Career Development Program in the nation for 21 years! In fact, we have won multiple national and state adult education program awards on behalf of USW Local 1010 Members! This

(Continued on page 5)



*Roger Hughes
Management Representative*

Growth - a necessary ingredient for Improvement

How many of you are gardeners? In early May, I tackled the annual task of planting flowers in our flower garden at home. I prepared the ground, planned the placement of the 'flower starts', planted them and then added the Miracle-Gro fertilizer. Since that time, I've added Miracle-Gro fertilizer a few times and had to pull a few weeds but mostly I've watched the flowers grow and bloom. The flowers have now created a beautiful improvement to our back yard.

Reflect for a moment on yourself and ask if there are any areas in you life that needs growth leading to improvement. Some of the areas could be related to your job, and/or your personal development. Imagine for a moment that you are the 'flower start' in the flower garden mentioned above. Realizing that growth and improvement is needed is similar to "preparing the ground." Making a plan to accomplish growth and improvement is similar to "the plan to place the flowers." DECIDING

(Continued on page 4)



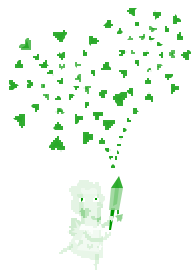
***Links** is a publication of the Bernard Kleiman JobLink Learning Center*

Editors: Tom Zmigrocki & Marcia L. Taylor

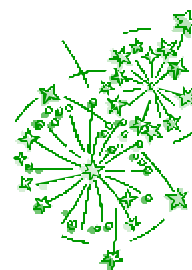
***JobLink Subcommittee:** Diane Lentz, Roger Hughes, Steve Wagner*

A big thanks to Wendell Harris for the crew photo on the cover.

Best Wishes Diane !!



You're Invited!



Diane's Farewell Days

After 21 years as Joblink's coordinator Diane is retiring!

We hope you'll join us in wishing her well **August 16 & August 17** at JobLink.
Drop by any time between 10:00 am and 4:00 pm



A Friendly Farewell *by Tom Zmigrocki*

Of the many accomplishments that Diane has had over the years few were as important and beneficial to JobLink as the establishment of the Friends! We are the learning advocates who help bring JobLink's message to our fellow workers in the mill. Diane liked to call us "the eyes and ears of JobLink in the workforce". Because we worked so closely with her over the years, we would like to say a few words of thanks to our friend Diane.

I have known Diane Lentz for almost 20 years and have always been amazed at her boundless energy and commitment to all aspects of JobLink. A tireless worker who has always striven to make JobLink the best of the best. Busy yes, but never too busy to stop and talk or listen to your problems. A warm smile, softly spoken words of encouragement, compassionate understand and even a gentle hug if needed, these are the things that I remember most. A truly special person I am honored to call friend. Have a wonderful retirement, you deserve it more than most. **Tom Zmigrocki**

I met Diane at the Hammond Adult Education Program more than 20 years ago. She was an English teacher who helped new students improve their English. Right now, I often meet with her to talk about JobLink. As the coordinator, she is not only a very hard worker, but she has also made JobLink a successful school. For your 21 years of hard work at JobLink, I'd like to say, "Diane, we will be missing you. Congratulations on your retirement and best wishes for a wonderful future."
Genfu Tai

I met Diane many years ago; the one thing I noticed about her was her wonderful smile. She always smiled when speaking to me, especially when I was on the war path about some issue. After speaking with her, whatever the issue was it seemed trivial after our conversations. The most important thing I will remember about Diane's work is her helping the Friends of JobLink to be creative and teaching us the importance of learning, and how we should convey to our friends and coworkers that a mind is a terrible thing to waste. Diane helped get so many wonderful classes together. My favorite classes were the Spanish 101 and the Quilting class. Diane you are a great leader and deserve a retirement life fit for a Queen. **Gail Richardson**

Well Diane, thank you for the many years of education your help provided. I know your next years will be enjoyed with your family in Minnesota. Thank you for helping me and many others to have the opportunity to get an education through

(Continued on page 4)

Staff News: Who's Doing What at JobLink?

Kathy Long has been at JobLink for nearly four years leading the Weight Watchers groups that meet on Tuesdays. In that time, our participants have lost a combined weight of 4,541 pounds! In fact, we have 3 men who have each lost 80 pounds. A truly amazing accomplishment.

A married mother of three and grandmother to two, Kathy brings experience and a personal perspective to her work at Weight Watchers.

"I was going to meetings as a member years ago with my mother and sister. When I had nearly reached my goal of losing 37 pounds, a manager came to a meeting and asked if anyone was interested in working with Weight Watchers."

She thought she would enjoy it, so she started working right away even though her mother said, "You're too busy to do that!" In 1997 she began conducting meetings which was no problem to a person who has no fear of speaking in front of groups. She feels that she is very much a people person, so the job fits her personality well.

"I really like helping people reach their goals. It gives

me joy to see the smiles on their faces when they tell me something positive about changes they've made in their lifestyles. Losing weight is a long journey because it requires lifestyle changes, which is not easy."

Besides the groups at JobLink, Kathy conducts classes at the Burns Harbor center, Portage, Schererville, Highland and downtown Chicago.

When asked how JobLink differs from other places, she responded,

"There isn't much difference. People are people and the feelings people have about food are universal.

But in a work place, people do have quite a bit in common, so when one person loses weight, it gives others the confidence to do the same.

At JobLink, people are very anxious to learn, so even when they can't make it to each session, they come ready to learn to the sessions they can attend and I get them caught up."

Diane has run a tight ship here at JobLink. Everyone is well-informed and knows what's going on. It's been a pleasure to work with her.



Kathy Long

(Continued from page 3) a friendly farewell

the JobLink organization. Thank you for everything. **John C. Schultz**

First, I would have to say that anyone who decides to take the great leap of trying to teach any 'old steelworker dog' new tricks requires a tremendous amount of courage, strength, and optimism. Diane always seems to be constantly balancing the needs of her students (us old steelworker dogs) and the demands of the Union, the Company, and ICD. The fact that Diane has accomplished this task brilliantly is a remarkable achievement. When I was involved with the Steelworkers on Stage project Diane was always there to help resolve any problem that came up, and encouraged all of us to perform our best.

Steelworkers have a rare gift in that we are given the opportunity to achieve academic degrees, technical certificates, or attend customized classes that nurture our interests and improve our lives. It is a privilege for me that Diane has been a part of that journey. **John Walker**

Diane has touched many people's lives by helping them become the best they could be through her tireless commitment to providing Local 1010 members with an endless array of educational opportunities. **Herman Loyd**

Muchas gracias for everything that you have done in your 21(?) years at the B.K. Learning Center. Over the years you've met every challenge and/or project with a contagious enthusiasm and sheer determination. I'm sure it wasn't easy implementing the program that the ICD envisioned to educate steelworkers.

(continued from previous column) a friendly farewell

Of course, you've assembled a fine team @ JobLink to help you meet the goals that you and others have set for the Learning Center. But, every team needs a captain and you filled that role well as the many success stories that are proudly displayed @ JobLink attest to.

Johan von Goethe said: *One ought, every day at least, to hear a little song, read a good poem, see a fine picture, and, if it were possible, to speak a few reasonable words.* I'm pretty sure this is the attitude you will take towards retirement, as I believe this is the mindset you tried to foster in all of the JobLink students that you have encountered over the years. To improve ourselves by doing something good for ourselves.

Wishing you only the best as you close the JobLink chapter of your life. **Jerry J. Torres**

(Continued from page 2) Roger Hughes

TO ACT is similar to being "planted." Securing classes is similar to "the Miracle-Gro fertilizer" used as the catalyst to accomplish the growth and eventually the improvement you are seeking.

JobLink can help you with your growth goals. Pick up a course catalogue or go to their web site to review hundreds of offerings that will assist you in your quest for growth and improvement.

JobLink itself has grown over the last 21 years always adapting to your needs. It has been cultivated from the start by Master Gardener Diane Lentz who has continually nurtured the learning center to make it what it is today. She is soon to retire, so best wishes, Diane

Four Million Gallons of Water *By Marcia Taylor*

Have you been wondering what's going on with JobLink? Have you noticed that it's all wrapped up? East Chicago is building a water filtration plant right in front of JobLink. When it is finished this massive concrete structure will hold four million gallons of water. For the last couple of weeks they have been spraying liquid concrete onto the exterior wall of the water tank. This slow but steady process will continue until the walls are at least 15 inches thick. There has been a continuous parade of trucks and concrete mixers passing by. Although it has been fascinating to watch, there is also some danger involved.

During this phase of the construction, there is the chance that our building would get splattered with overspray. Because there was also a chance of damage to the cars, parking was moved to the



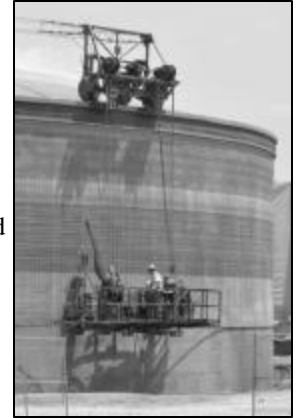
The 4 million gallon water tank

north lot. The main building has been covered with a large, heavy layer of plastic. In addition, the group working on the filtration plant also built what we affectionately call our "three season room" – an enclosed corridor that now connects our two buildings.

For your safety please enter through the door by the carpentry shop.

We believe that when it's all finished and things return to normal our little corner of the universe will look better than ever.

Just because we are under wraps, doesn't mean that we're closed. Classes are going on as normal. In fact, July 5th is the first day of our next registration.



The sprayer in action

(Continued from page 2) Diane Lentz

25.36% took Basic Skills courses

54.35% took Pre-Technical courses

20.29% took Personal development courses

In addition, **162** USWA, Local 1010 utilized the Tuition Assistance Program.

So numbers are easy to count. But the story behind those numbers is the fascinating part...

What did you learn? What did you discover about yourself? Was this something that you had thought about doing for a long time? How will this help you on the job or in your personal life? Did this set an example of the value of learning for your family? How do you feel about yourself having completed this course? What are you going to study next?

These are the important questions that only you can answer.

As I plan my August retirement, I want to thank you for being a participant at JobLink. Thank you for taking me along on your journey for 21 years. It's been such a pleasure working with you. You'll never know how much I have enjoyed working with you. The quote I leave you with is exactly how I feel.

"Do something you love and you will never work a day in your life."

(Continued from page 2) Steve Wagner

was accomplished by our members utilizing the program's educational opportunities that were coordinated daily with excellence by Diane Lentz.

Diane's commitment was so strong to education that she really struggled to retire and end her 21+ years of dedicated service to Local 1010 members! She actually (joking...I think) suggested that I fire her so that we wouldn't think that she was wavering on her commitment to help provide educational opportunities for all of us!

Please join me in wishing Diane, her husband, Ray and her family the best of health and happiness as Diane embarks on her new journey in life---Retirement!

On behalf of the thousands of steelworkers whose lives you have made better, we **"Thank You Diane"**

Words To Remember!

The most beautiful discovery true friends make is that they can grow separately without growing apart.

~Elisabeth Foley

Stay a friend, Diane!

Joblink Reminder



**JobLink will be closed on Fridays
Between
June 17 through July 29**

**JobLink will be closed Monday
July 4th!
Have a great holiday!**

Bernard Kleiman *JobLink* Learning Center

Mittal Steel Indiana Harbor
3210 Watling Street (7-200)
East Chicago, IN 46312

JobLink Friends:

Rick Barna	[3 C/S E 80" Tandem]
Ken Bogucki	[Utilities 5A/C]
Jaime Calderon	[#2 Cold Strip]
Tom Christman	[80" Hot Strip]
Julian Gonzales	[MHS]
Bob Guevara	[Plt. 4.]
Kevin Kelly Sr.	[IN Harbor Coke]
Ed McHaskell	[Coke Energy]
Mike Nelson	[4BOF Mech Turn]
Lawrence Person	[Internal Logistics]
Gail Richardson	[3 Cold Strip West]
Phillip Rodriguez	[5 AC/Utilities]
John Shultz	[3 Cold Strip West]
Genfu Tai	[R & D]
Jerry Torres	[MEU]
Nick Valle	[Union Hall]
John Walker	[#4 S.P.]

PRESORT STD
U.S. POSTAGE
PAID
GRIFFITH, IN
PERMIT # 24

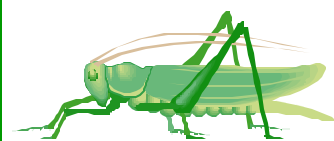
Lookin' Good! Helping Your Garden Grow

By Valerie Stabenow, Master Gardener Intern from Freeport, IL

Hopefully we are past this horrible spring of cold weather, damp, not enough sun and seemingly, too much rain. This article will provide you with some suggestions for keeping your garden at its best.

Generally speaking, most plants and lawns in our region require an inch of rain a week, so be prepared to make up the difference if we hit a dry spell. If you put out the sprinkler, do it in the morning, so that the moisture has a chance to evaporate before nightfall. Too much dampness can lead to plant diseases. Plants in the shade are prone to foliar (leaf) diseases, so try to keep the leaves dry. Shade plants also need moderate air movement or mildew will appear.

Fertilizing can be done with a complete fertilizer, such as 10-10-10. However, if you live in a watershed area, have a lot with water access or a waterfront property, you should only use a 10-0-10 fertilizer, so no phosphorus is added to the lake or water area.



Insects will also start making an appearance and chomping on flowers and leaves. An insecticidal soap will eliminate aphids and mites. Control chewing insects: earwigs, caterpillars and beetles with Sevin.

Weeds may like the garden too, and you can hoe out the seedlings as they appear. If you prefer a chemical approach, try Ready to Use (RTU) Weed Be Gone in a pump spray bottle.

If you like how it works, it's also available as a concentrate for mixing in larger sprayers

June may also be the beginning of mole season. While there are plenty of devices to temporarily scare them away, they will return and can decimate your lawn. Personally, I have had excellent results with Bayer's Season Long Grub Control. Since the moles are tunneling to look for their favorite snack, this product gets rid of the grubs! Be sure to apply it not only in the areas where you have had moles, but over all your lawn. I can tell you that if you leave out one area, that's where they will come and start tunneling in the lawn. For really fierce fights, I get out the spring traps and that is the end of the battle.

Pruning and Dividing: As soon as the leaves die down on spring bulbs, lift and divide them. Plant the bulbs right away or store them in a cool, dry place until fall. For other perennials, as the blooms fade, cut them off. Roses need constant pruning to remove dead or diseased stems. The sooner a spent flower is removed, the sooner a new flower will develop on that stem. If you have large clumps of perennials, dividing them is necessary to their health. Separate the sections with a spade, making sure each new clump has sufficient roots for a new start. Make sure to plant them with the same conditions as the parent plant and water in thoroughly.



To learn more about the Master Gardening Program in your area, visit http://www.ahs.org/master_gardeners/index.htm